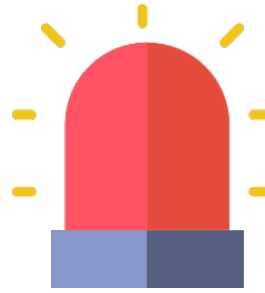


GRAVENHURST FIRE & EMERGENCY SERVICES

2020 by the Numbers



Our Fire Experience:

Influencing Factors
Influencing factors can create variances in both our actual fire experience and data comparisons from year-to-year.

Fire Prevention & Education Activities
such as enforcement of the fire code, presence of smoke alarms, and efforts to educate the public can create greater awareness of fire risk in the community

Geography & Weather
station locations, topography, road congestion and condition, and severe weather (including the impact of climate change) affects response

Nature & Extent of Fire Risk
Type of building or occupancy and type of emergency affect emergency operations

Response Agreements
Mutual aid and automatic aid agreements

Service Levels
are set by local municipal council based on local needs and circumstances

Staffing Model
The Gravenhurst Fire Department is a "composite" fire service comprised mostly of volunteer firefighters – this results in slower response times as firefighters must first "muster" at the station.

Top Ten Data Points:

	✓ Calls For Service	275
	✓ Apparatus Movements	1219
	✓ Estimated Dollar Loss Due to Fires	\$3,237,900
	✓ Public Injuries/Fatalities	0/0
	✓ Budget	\$1,005,120
	✓ Cost per Capita	\$81.64/yr. \$6.80/mo.
	✓ Recruits in Training	8
	✓ Regular FF's & Officers in Training	45 (5015 hours of training conducted in 2020)
	✓ Media /Public Events	865
	✓ Fire Code Inspections	84

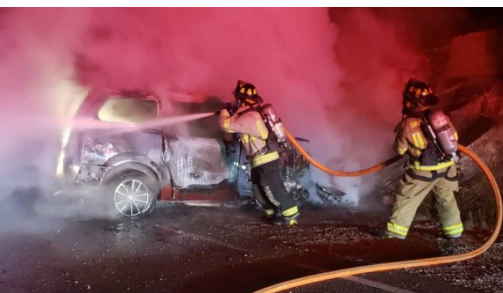


Geography and Demographics – Statistics Canada records (2016 amended census) tally the population of Gravenhurst at **12,311 persons residing in 8,302 dwellings**. With a **land area of 518.59 km² (200.23 sq. mi)**, it had a **population density of 23.8/km²** in 2016.

In the summer months, Gravenhurst has a population of approximately 34,000 owing to the influx of cottagers.

Age Structure: 0–14 years: **11.5%**, 15–64 years: **61%**, 65 years and over: **27.5%**.

Gravenhurst Firefighters - Serving our community...



INCIDENT TRENDS AT A GLANCE...

